

IP Wireless / Wired Camera  
***Quick Installation Guide***  
(For Windows OS)



**Model:FI8908W**

**Color: Black**



**Model:FI8908W**

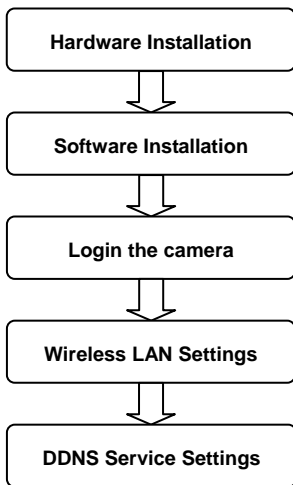
**Color: White**

# Quick Installation Guide

## Packing List

- |                                 |  |
|---------------------------------|--|
| 1) IP CAMERA X 1                | 2) Wi-Fi Antenna (only available for wireless model) |
| 3) DC Power Supply X 1          | 4) Network Cable X 1                                 |
| 5) Mounting bracket x1          | 6) CD X 1 (Include user manual, IP camera tool)      |
| 7) Quick Installation Guide X 1 |  |

## Quick Installation Guide Flow Chart



## 1 Hardware Installation

- (1) Open the package



Figure 1.0

- (2) Connect the Antenna.

Screw the antenna to the back of the camera, make sure it attached well.



Figure 1.1

- (3) Plug the network cable and power.

Use network cable connects with the camera and your router. Plug in the power.

The green network light under the lens will blink and the camera will pan/tilt.



Figure 1.2

## 2 Software Installation

Put the small CD in your CD driver of your computer and find the folder "For Windows", open it and choose IP Camera Tool. Double click **IPCamSetup.exe** and install the software as instruction.



Figure 1.3

Only click **Next**, you will complete the software installation.

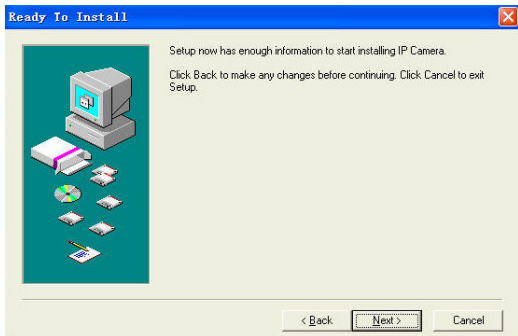


Figure 1.4

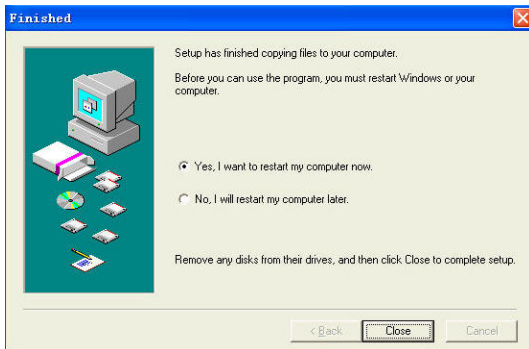
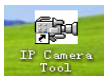


Figure 1.5

You can find the icon on the desktop after you install the IP camera tool.



### 3 Login the camera

Dbclick the IP Camera Tool and you could see the following picture.

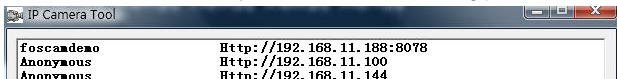


Figure 1.6

The IP camera tool could find the cam's IP automatically after you plug the network cable. If not, Please make sure that DHCP is enabled in your router. Don't enable MAC address filter. Or disable firewall or antivirus on your computer to try.

Dbclick the IP address on the IP camera tool and you will enter the login UI.



Figure 1.7

**Note:** If you use IE browser, please choose the first login mode (**ActiveX Mode**) to login. If you use other browsers, such as Firefox, safari or Google chrome, Please choose the second login mode (**Server Push Mode**) to login. You can see living video after click login.

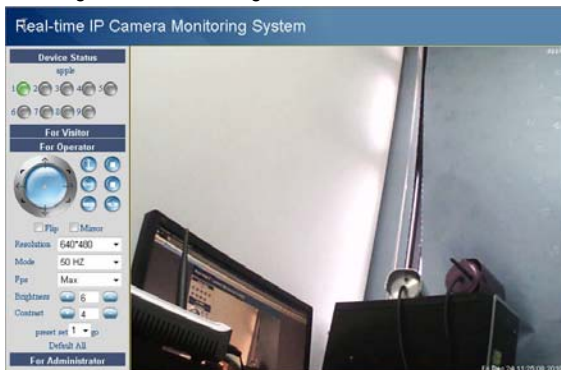


Figure 1.8

If you could not see living video, Please make sure allow the activeX running when it prompts you. (details: see user manual)

If you only see a black screen with a red cross in the center, Please change a port number to try, do not use port 80. Use port 85, 8005.etc.

Or shut down firewall or anti-virus software on your computer to try again.

## 4 Wireless LAN Settings

(1) Please choose **"For Administrator"** and click **"Wireless LAN Settings"**.

Then choose **"Using Wireless LAN"**.

Click scan button and the camera will detect WIFI device around it.

It could also find your router and show it in the list. (Figure 1.9)

If the camera could not find some WIFI device, please click the scan button again.

Make sure that the time between the first scan and the second is more than 1~2 minute.

Wireless Lan Settings	
Wireless Network List	<div style="border: 1px solid gray; padding: 2px;">           e-sung[940c6d5a8d50] infra WPA/WPA2-PSK            yida[0027195e1d3a] infra WPA/WPA2-PSK            Century-ic-SZ1[00265a422f26] infra WEP            TP-LINK_TANJZ[0023cd81bb72] infra WPA/WP...         </div>
Using Wireless Lan	<input checked="" type="checkbox"/>
SSID	<input type="text"/>
Encryption	None
<input type="button" value="Submit"/> <input type="button" value="Refresh"/>	

Figure 1.9

(2) Click the SSID of your router in the list, the corresponding information (SSID & Encryption) will be filled in the following boxes automatically.

You only need fill in share key. Make sure that SSID, Encryption and share key you filled in for the camera are exactly the same with your router.

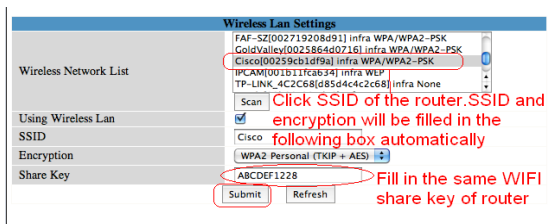


Figure 2.0



Figure 2.1



Figure 2.2

Please click **Submit** after finish these settings, the camera will reboot.

Plug out the network cable after you click submit about 10 seconds.

The camera will work on WIFI after reboot.

**Note:** If your camera could not connect WIFI, please see FAQ in user manual.

## 5 DDNS Service Settings

### 5.1 Static IP user

Static IP users need not set DDNS service settings for remote access. When finished the connection of Camera in LAN and port forwarding. (Figure 3.6/3.7) You can access the camera directly from Internet by the WAN IP and port number. There are two ways to obtain your WAN IP.

- **Obtain the WAN IP from Website**

Please enter these strings in your browser: <http://www.whatismyip.com>. The webpage at this address will show you the current WAN IP.



Figure 2.3

- **Obtain the WAN IP address from the router**

You can find the WAN IP in your router. Normally, it is in system status.

Take the WRT54G router of LINKSYS for example,

- 1) Obtain the IP address of the router(LAN gateway address),user

- name and password for login the router from the network administrator,
- 2) Enter the LAN IP address of the router (LINKSYS WRT54G, such as: default LAN IP is 192.168.1.1) in the address bar of the IE to login the router; Open the **Status** page to find out the WAN address of the router. In this example, the address is 183.37.28.254.

### Access the IP Camera from the Internet

You can access the IP Camera from the Internet. (remote access) Enter WAN IP address and port number in IE browser or other browsers you use. For example, [Http:// 183.37.28.254:85](http://183.37.28.254:85)

**Note:** Make sure the Port mapping is success. You can do port mapping by two ways.

- 1) Enter setting page of the router which camera connect with to enable UPnP function. Then login the camera as administrator, choose **UPnP Settings** to enable UPnP and make sure the state is "UPnP success".
- 2) Do port forwarding manually. (details: Figure 3.6/3.7)

If your router has Virtual server, it is used to do port mapping. Please add the camera's LAN IP and port which you set in basic network settings to the Virtual map list.

**Note:** If you plug the camera in a router, it will have dynamic IP address and you need set DDNS service settings to view it remotely.

## 5.2 How to do DDNS Service Settings (For dynamic IP user)

- (1) Please first visit [www.dyndns.com](http://www.dyndns.com) to get an account.

Choose **Sign up FREE** to get a free account.

## Dynamic DNS Free

### Stay Connected With DynDNS

DynDNS Free allows you to create a hostname that points to your home or office IP address, providing an easy-to-remember URL for quick access. We also provide an update mechanism which makes the hostname work with your dynamic IP address. We continue to offer this service free to the Internet community as we have done so for nearly 10 years.



Figure 2.4

Please set as the following picture.

**Add New Hostname** [I read the page](#)

You don't currently have a [Dynamic DNS Pro service](#) in your account.

To get the full benefits of Dynamic DNS, including premium subscriber domains and other features, [add Dynamic DNS Pro to your shopping cart](#) (or try it with \$1.99/monthly subscription).

**Here fill in a name and choose dyndns.org**

Hostname:

Website:  also  
(for example to use same settings for www.host.dyndns-for-your-domain.com)

Service Type:  Host with IP address  
 Webpage Redirect (URL forwarding service)  
 Offline Hostname

IP Address:  **Your current internet IP**  
Your current hostname IP address is 193.37.10.51  
 TTL value is 60 seconds. [Edit TTL...](#)

Mail Routing:  I have mail server with another name and would like to add MX hostname...

Figure 2.5

Then choose **Add To Cart**.

**What do you want to use this host for?**  
 Select services and devices you would like to use with this hostname.

Work From Home Office or VPN:

vpn remote file access remote desktop mail server web server  
 chat server ftp backup ssh database voip

Hosting and Design For Web Sites and Blogs:

blog gallery wiki portfolio ecommerce web page

Remote Access For Devices:

dvr webcam data storage cctv printer alarm and security  
 thermostat weather station game server home automation

Click here after you finish the settings above



Figure 2.6

Set the following information as the picture below.

Username: cyjun321  
 Password: \*\*\*\*\*  
 Confirm password: \*\*\*\*\*  
 Email: gxnn2003@tom.com  
 Confirm email: gxnn2003@tom.com

Subscribe to:

- DynDNS.com newsletter (1 or 2 per month)
- Dyn Inc. press releases
- Remove HTML formatting from email

Security Image: **Fill in user name, password and email address**

5 0 5 1 5

Enter the numbers from the above image:

I agree with the [acceptable use policy \(AUP\)](#) and [privacy policy](#).

**Click here to create account**

**Create Account**

Figure 2.7

The website will send you an email to your mailbox just set.

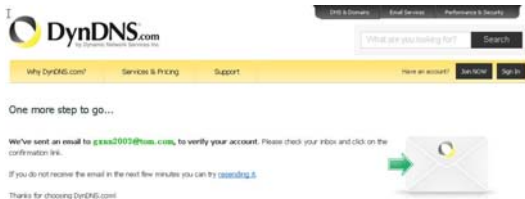


Figure 2.8

Please click the link in your email to activate your account.

Or copy the link and paste it to IE or other browser you use to **activate the account**. Make sure that your account was activated or DDNS settings will be failed.

Your DynDNS.com Account 'cyjun321' has been created. You need to visit the confirmation address below within 48 hours to complete the account creation process:

<https://www.dyndns.com/confirm/create/Mim96uomXkKdN4LNp8AP1Q>

Our basic service offerings are free, but they are supported by our paid services. See <http://www.dyndns.com/services/> for a full listing of all of our available services.

Figure 2.9

You will see the following picture. Click **Activate services>>**

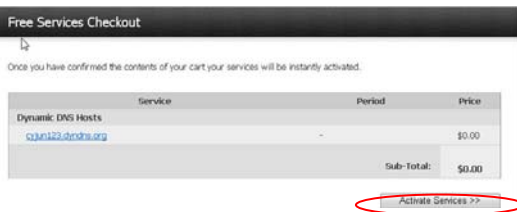


Figure 3.0 [Click here to activate services](#)

All the settings are finished until you see the following picture. (Figure 3.2)

You can see your host name in the list.

Please remember the host name, user name and password; they are needed when you set DDNS service settings of your camera.

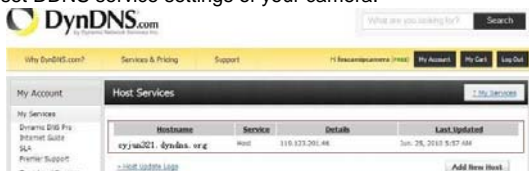


Figure 3.1

## (2) Basic Network Settings

We need set a static IP for the camera when do DDNS service settings. Login your camera and set basic network settings as the picture below.

Basic Network Settings	
Obtain IP from DHCP Server	<input type="checkbox"/>
IP Addr	192.168.11.163
Subnet Mask	255.255.255.0
Gateway	192.168.11.1
DNS Server	192.168.11.1
Http Port	8090
Network Lamp	<input checked="" type="checkbox"/>
<input type="button" value="Submit"/> <input type="button" value="Refresh"/>	

Figure 3.2

Here make sure that your camera is in the same subnet as your router. In other words, keep the first three sections the same with your router or your computer.

Gateway is your router's LAN IP. You can find DNS server in your router, if you don't know the DNS server; you can also find it in local area connection of your computer. (details: see user manual—Basic network settings)

Normally, it contains your computer's LAN IP, gateway, DNS server.

Please click submit after finish these settings, the camera will reboot.

## (3) DDNS service settings

Please set DDNS service settings as follows. Use the DDNS domain name you

[www.foscam.com](http://www.foscam.com)

get from the dyndns website.

DDNS Service Settings	
DDNS Service	DynDns.org(dyndns) ▾
DDNS User	cyj321
DDNS Password	●●●●●●●●
DDNS Host	cyj321.dyndns.org
Re-Update Ignoring All Errors	<input type="checkbox"/> Never do this unless your hostname has been unblocked
<input type="button" value="Submit"/> <input type="button" value="Refresh"/>	

Figure 3.3

Please click submit after fill in all the information. The camera will reboot. Please login in the camera again to check if DDNS settings is succeed.

Device Status	
Device ID	000000000001
Device Firmware Verion	11.22.2.29
Device Embedded Web UI Verion	2.4.8.15
Alias	apple
Alarm Status	None
DDNS Status	dyndns Succeed http://cyj321.dyndns.org:8090
UPnP Status	No Action

Make sure DDNS succeed

Figure 3.4

(4) How to do port forwarding.

Login your router; find the right place to do port forwarding.

Here use a Linksys router for example.

You can do single port forwarding. Set as the following picture. (Figure 3.3)

Application Name	External Port	Internal Port	Protocol	To IP Address	Enabled
None	---	---	---	192.168.1.1	<input type="checkbox"/>
None	---	---	---	192.168.1.1	<input type="checkbox"/>
None	---	---	---	192.168.1.1	<input type="checkbox"/>
None	---	---	---	192.168.1.1	<input type="checkbox"/>
None	---	---	---	192.168.1.1	<input type="checkbox"/>
app3	8090	8090	Both	192.168.1.163	<input checked="" type="checkbox"/>
			Both	192.168.1.1	<input type="checkbox"/>
			Both	192.168.1.1	<input type="checkbox"/>
			Both	192.168.1.1	<input type="checkbox"/>

Figure 3.5

You can also choose port range forwarding.

In order to forward the port successfully, we recommend you can set both of the start port and end port as the same port number. Add the camera's LAN IP and port (Figure 3.3) in the list of port forwarding page.



Figure 3.6

Please do not forget to **save** these settings when you finish them.

(5) After finish all these settings above, you can use DDNS domain name and port number to login your camera at any place.

For example, use strings <http://cyjun321.dyndns.org:8090> to login the camera.

Here cyjun321.dyndns.org is the DDNS Host, 8090 is camera's port.



Figure 3.7

## Conclusion

[www.foscam.com](http://www.foscam.com)

Other detail settings, please consult user manual.

ShenZhen Foscam Intelligent Technology Co., Ltd

